

WS-Series High Pressure Wing Style

Interchange Data:

- Snap-Tite 75-Series, Hydraulics Inc. Series-5TV, DNP VFF-HD, Stucchi VOF, Faster OGV, Eaton FD85, Holmbury LC

Materials:

- Machined components are manufactured using solid Steel or 316 Stainless Steel bar stock.
- Stainless Steel retaining rings, and springs maximise corrosion resistance and extend service life.
- Steel componentry is plated using ROHS Compliant Zinc Nickel for superior corrosion resistance.
- Rugged high-strength Steel sand-cast wing nut for threaded connect and disconnect operation.
- 316 Stainless Steel nipple connection-threads are coated to prevent galling during connection/disconnection.



Seal Components:

- Nitrile (Buna-N) seals are standard, providing a temperature range of -40°C to +121°C (-40°F to +250°F)
- PTFE anti-extrusion ring protects main coupling O-Ring from dynamic impulse pressure damage.
- Main valve seal is 'housed' to improve seal integrity during pressurised connection/disconnection.

Rated Pressure Chart:

WS-SERIES HIGH PRESSURE WINGSTYLE INTERCHANGE (CONNECTED)

BODY SIZE	STEEL COUPLER/PLUG				316 STAINLESS STEEL COUPLER/PLUG			
	Max. Working		Burst		Max. Working		Burst	
	PSI	Bar	PSI	Bar	PSI	Bar	PSI	Bar
3/4"	5,000	345	32,800	2,200	3,000	200	20,000	1,400
1"	5,000	345	25,100	1,700	3,000	200	20,000	1,400
1 1/4"	5,000	345	25,100	1,700	3,000	200	15,000	1,000
1 1/2"	5,000	345	20,000	1,400	3,000	200	15,000	1,000
2"	5,000	345	15,000	1,000	3,000	200	15,000	1,000

Technical Specifications:

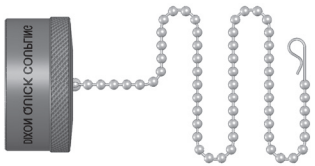
BODY SIZE	INTERCHANGE STANDARDS				FUNCTIONAL PARAMETERS				
	U.S. MILITARY	U.S. GOVERNMENT	INTERNATIONAL STANDARDS	ANSI/NFPA STANDARDS	LOCKING BALL QUANTITY	AIR INCLUSION	FLUID LOSS	VACUUM INCH HG	FLOW ΔP = 30 PSI L/MIN
3/4"	-	-	-	-	Threaded	10cc	10cc	27.4	132
1"	-	-	-	-	Threaded	23cc	15cc	27.4	244
1 1/4"	-	-	-	-	Threaded	50cc	30cc	27.4	395
1 1/2"	-	-	-	-	Threaded	100cc	60cc	27.4	602
2"	-	-	-	-	Threaded	200cc	135cc	27.4	1015

Quick Release Couplings



WS-SERIES COUPLER RIGID DUST PLUG

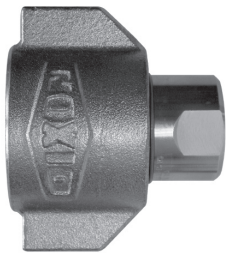
PART NO	BODY SIZE	LANYARD	BODY MATERIAL
6WSDP-A	3/4"	SS Bead Chain	Aluminium
8WSDP-A	1"	SS Bead Chain	Aluminium
10WSDP-A	1 1/4"	SS Bead Chain	Aluminium
12WSDP-A	1 1/2"	SS Bead Chain	Aluminium
16WSDP-A	2"	SS Bead Chain	Aluminium



WS-SERIES NIPPLE RIGID DUST CAP

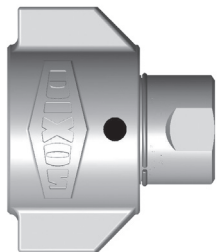
PART NO	BODY SIZE	LANYARD	BODY MATERIAL
WS6DC-A	3/4"	SS Bead Chain	Aluminium
WS8DC-A	1"	SS Bead Chain	Aluminium
WS10DC-A	1 1/4"	SS Bead Chain	Aluminium
WS12DC-A	1 1/2"	SS Bead Chain	Aluminium
WS16DC-A	2"	SS Bead Chain	Aluminium

L



(Female Thread)

Wrench flats are pictured, non-flat fittings are standard



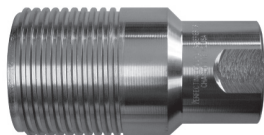
WS coupler with view port example

WS-SERIES HIGH PRESSURE WINGSTYLE INTERCHANGE COUPLER

PART NO	BODY SIZE	THREAD SIZE	BODY MATERIAL
6WSF4	3/4"	1/2" - 14 NPTF	Steel
6WSF6	3/4"	3/4" - 14 NPTF	Steel
6WSF6-SS	3/4"	3/4" - 14 NPTF	316 Stainless Steel
6WSBF6	3/4"	3/4" - 14 BSPP	Steel
6WSBF6-SS	3/4"	3/4" - 14 BSPP	316 Stainless Steel
6WSOF6	3/4"	1 1/16" - 12 ORB	Steel
8WSF8	1"	1" - 11 1/2 NPTF	Steel
8WSF8-SS	1"	1" - 11 1/2 NPTF	316 Stainless Steel
8WSBF8	1"	1" - 11 BSPP	Steel
8WSBF8-SS	1"	1" - 11 BSPP	316 Stainless Steel
8WSOF8	1"	1 5/16" - 12 ORB	Steel
10WSF10	1 1/4"	1 1/4" - 11 1/2 NPTF	Steel
10WSF10-SS	1 1/4"	1 1/4" - 11 1/2 NPTF	316 Stainless Steel
10WSBF10	1 1/4"	1 1/4" - 11 BSPP	Steel
10WSBF10-SS	1 1/4"	1 1/4" - 11 BSPP	316 Stainless Steel
10WSOF10	1 1/4"	1 5/8" - 12 ORB	Steel
12WSF12	1 1/2"	1 1/2" - 11 1/2 NPTF	Steel
12WSF12-SS	1 1/2"	1 1/2" - 11 1/2 NPTF	316 Stainless Steel
12WSBF12	1 1/2"	1 1/2" - 11 BSPP	Steel
12WSBF12-SS	1 1/2"	1 1/2" - 11 BSPP	316 Stainless Steel
12WSOF12	1 1/2"	1 7/8" - 12 ORB	Steel
16WSF16	2"	2" - 11 1/2 NPTF	Steel
16WSF16-SS	2"	2" - 11 1/2 NPTF	316 Stainless Steel
16WSBF16	2"	2" - 11 BSPP	Steel
16WSBF16-SS	2"	2" - 11 BSPP	316 Stainless Steel
16WSOF16	2"	2" - 12 ORB	Steel

* Wrench flats may result in reduced pressure performance.

WS-SERIES HIGH PRESSURE WINGSTYLE INTERCHANGE NIPPLE



(Female Thread)

Wrench flats are pictured,
non-flat fittings are standard

PART NO	BODY SIZE	THREAD SIZE	BODY MATERIAL
WS6F4	3/4"	1/2" - 14 NPTF	Steel
WS6F6	3/4"	3/4" - 14 NPTF	Steel
WS6F6-SS	3/4"	3/4" - 14 NPTF	316 Stainless Steel
WS6BF6	3/4"	3/4" - 14 BSPP	Steel
WS6BF6-SS	3/4"	3/4" - 14 BSPP	316 Stainless Steel
WS6OF6	3/4"	1 1/16" - 12 ORB	Steel
WS8F8	1"	1" - 11 1/2 NPTF	Steel
WS8F8-SS	1"	1" - 11 1/2 NPTF	316 Stainless Steel
WS8BF8	1"	1" - 11 BSPP	Steel
WS8BF8-SS	1"	1" - 11 BSPP	316 Stainless Steel
WS8OF8	1"	1 5/16" - 12 ORB	Steel
WS10F10	1 1/4"	1 1/4" - 11 1/2 NPTF	Steel
WS10F10-SS	1 1/4"	1 1/4" - 11 1/2 NPTF	316 Stainless Steel
WS10BF10	1 1/4"	1 1/4" - 11 BSPP	Steel
WS10BF10-SS	1 1/4"	1 1/4" - 11 BSPP	316 Stainless Steel
WS10OF10	1 1/4"	1 5/8" - 12 ORB	Steel
WS12F12	1 1/2"	1 1/2" - 11 1/2 NPTF	Steel
WS12F12-SS	1 1/2"	1 1/2" - 11 1/2 NPTF	316 Stainless Steel
WS12BF12	1 1/2"	1 1/2" - 11 BSPP	Steel
WS12BF12-SS	1 1/2"	1 1/2" - 11 BSPP	316 Stainless Steel
WS12OF12	1 1/2"	1 7/8" - 12 ORB	Steel
WS16F16	2"	2" - 11 1/2 NPTF	Steel
WS16F16-SS	2"	2" - 11 1/2 NPTF	316 Stainless Steel
WS16BF16	2"	2" - 11 BSPP	Steel
WS16BF16-SS	2"	2" - 11 BSPP	316 Stainless Steel
WS16OF16	2"	2" - 12 ORB	Steel